

# HCBMR-6535-D



## • Characteristic:

- Effective radius coverage, larger range
- Integrated design of working device is equipped with heavy duty hydraulic cylinder, high strength and high reliability
- Flexible operation of the arm ensures precise positioning
- Electric proportional control, hydraulic vibration crushing, silent and efficient
- Equipped with a large rotary bearing, 360° rotation, and the pipeline is not entangled

## PERFORMANCE

|  |   |
|--|---|
| Boom hoist length (mm)                     | 6500  |
| Dipper stick length (mm)                   | 3500  |
| Max. horizontal working radius (mm)        | 12113   |
| Max. vertical working radius (mm)          | 9490  |
| Max. working depth (mm)                    | 8882  |
| Structural form of working arm main beam   | Large box design, welded with high tensile strength carbon steel Q3458B |
| Weight of machine excluding attachment(kg) | 10000   |

## HYDRAULIC HAMMER

|                                      |                   |
|--------------------------------------|-------------------|
| Hydraulic hammer model               | HC140             |
| Hydraulic hammer operating pressure  | 16-18 MPa         |
| Hydraulic hammer oil flow            | 120-180 L/min     |
| Blow frequency                       | 350-450 bpm       |
| Chisel diameter                      | φ140 mm           |
| Suitable for hydraulic hammer models | HC100/HC125/HC140 |

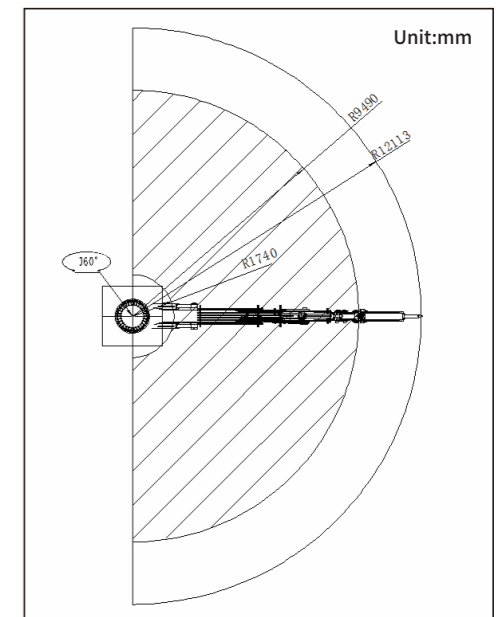
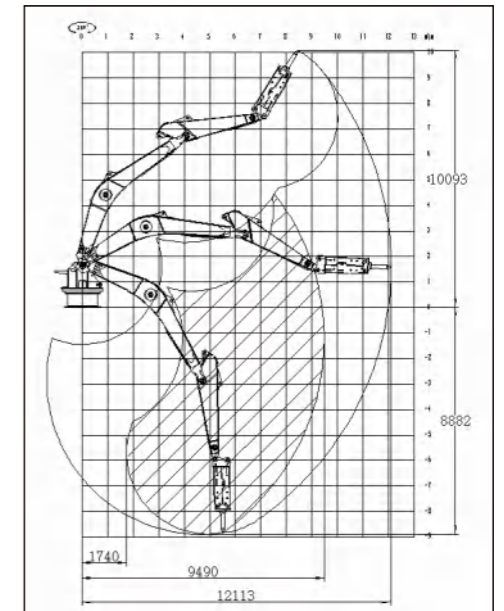
## CONTROL SYSTEM

|                        |   |
|------------------------|---|
| Control mode           | Operation joystick + emergency mechanical manual + wireless remote control + teleoperation system |
| IP grade of motor      | IP55  |
| IP grade of controller | IP67  |

## HYDRAULIC POWER UNIT

|             |                   |
|-------------|-------------------|
| Motor power | 55 kW/75 kW/90 kW |
|-------------|-------------------|

## RANGE



## Application:

